

X-Treme™ Electric Scooters

MODEL X-010

USER MANUAL

General Information about X-Treme Electric Scooters

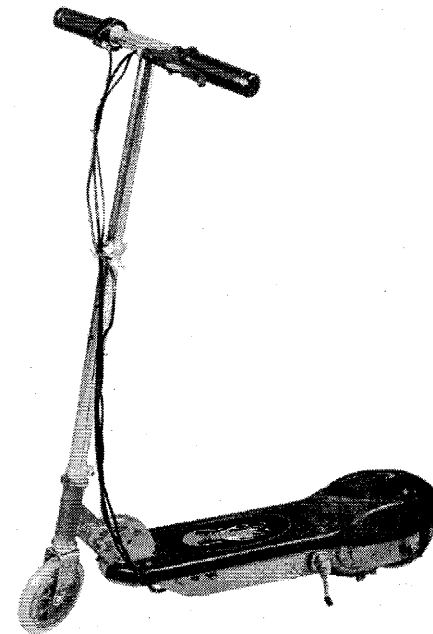
Visit: www.x-tremescooters.com/

Technical support

visit www.x-tremescooters.com/technical.html

Order parts for your electric scooter

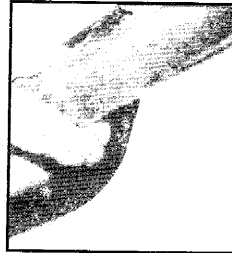
visit: www.x-tremescooters.com/service.html



Trouble	Possible Cause	Solution
(3)The continued mileage is not enough after charging for one time	(1)The air pressuer in the tyre is not enough (2)Undercharge or trouble of charger (3)The battery is aging or damaged (4)More up gradients, serious dead-wind, frequent brake and starting and overloading	(1)Aerate it fully (2)Charge fully or check if the connection of the plug of the charger is bad (3)Change the battery
(4)The charger won't work	(1)The plug of the charger drops off or the connection between the plug and the socket is loose	(1)Fasten the plug and connector (2)Weld the wiring
(5)Other troubles	(1)When you meet the troubles you can't solve or judge under the above guidelines (2)When the elements of electric machine, controller, charger or battery are damaged	(1)When you meet the above trouble, please contact the dealer of the repair station and don't take the liberty of opening the above components, otherwise you may lose this comany's warranty

6. Right adjustable handle

Accelerating the speed by rolling the right adjustable handle.



7. Power Switch

8. Troubleshooting and Solution

Trouble	Possible Cause	Solution
(1) Bad speed adjustment or lower maximum speed	(1) Too low voltage (2) The connection of the Adjustment steering handlebar is loose (3) The spring in the adjustment is invalid due to being blocked	(1) Charge the battery (2) Fasten after rechecking (3) Contact the dealer for change the spring
(2) After making electric source, the electric machine can't work	(1) The wiring of the battery is loose (2) The interrupt is out of order (3) The plug of the wiring if the electric machine is loose or damaged.	(1) Connect the wiring of the battery well (2) Repair and re-install it (3) Connect the repair station

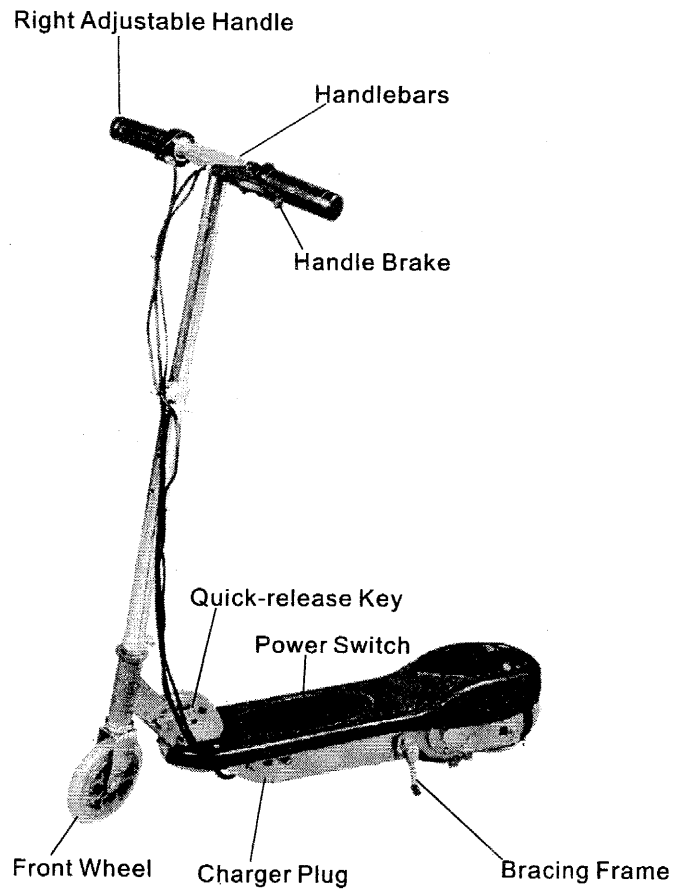
PREFACE

● Thanks for your great kindness to the product of this company. We hope that our product will bring you both convenience and joyfulness. Please read the manual carefully before use so as to ensure your safety and to enable your treasured vehicle to serve you better and longer

● Remember this product is neither damp proof nor waterproof!
● Check with local authorities for riding guidelines and restrictions. Wear a CPSC approved helmet along with knee and elbow pads for protection.

● Speed may vary according to riders' weight and surface conditions. This scooter is designed for level surface riding. It is not designed to climb a grade.

● Sliding by turning on the power switch and adjusting the right adjustable handle.

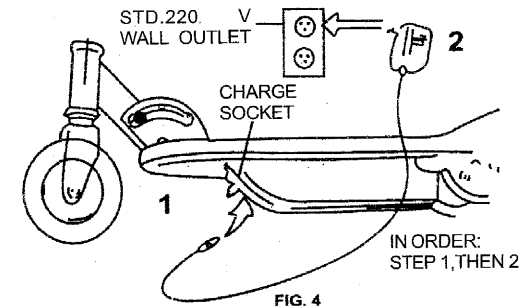


4. Battery

The battery selected for this vehicle is the lead acid dry cell battery solely used for the electric vehicle which has the following strong points: no necessary repair, high capacity and extended life.

SCOOTER BATTERY CHARGING	
SCOOTER USE TIME (BATTERY DISCHARGING)	CHARGING TIME (DO NOT OVERCHARGE)
10 MINUTES	3-4 HOURS
20 MINUTES	5-6 HOURS
30 MINUTES	6-8 HOURS

POWER USE REQUIREMENTS CAN VARY DEPENDING ON RIDER TRAVERSED. TIMES ARE RECOMMENDED AVERAGES.



5. Electric Machine

The electric machine adopted for this vehicle is 24V 100W dedicated continuous current dynamo solely for electric vehicle, with the strong points of small volume, lightweight, big power and strong anti-overloading performance, which can meet the needs of your daily transportation.

1. Steering Handlebar

When you adjust the steering handlebar, twist the bug on ther, lock up the bug tightly.

2. Charger

The charger adopted in this product is the specially designed intelligence charger. When charging, there is no need to be guarded by a specialist. Wherever there is 90V-230V alternating current, it can be conveniently used. This charge ycan prevent overcharge and will maintain the battery in the best condition.

When charging, insert the pinplug of the charger into the plug of the vehicle body and insert the plug to the current source. the charge time is three to six hours. When charging, the drive current stops automatically thus preventing the vehicle from starting.

3. Drive Controller

Drive controller is the main center of the drive system of the whole vehicle with the function under-voltage Protection of the battery, current foldback circuit and putting on the brake to interrupt power

Electric Scooter

● Handle Brake ●

- Pu Wheel Number 2 diameter of wheel: 150mm
- Folded size: 695×160×250MM
- Weight: 8.0kgs
- Brake: handle brake rear wheel drum brake
- Battery capacity: 4.5AH 24V
- Motor power: 100W
- Charging period: 3-6hours
- Charger type: 110-220VAC UL/CE Approved charger
- Speed: 12kms/h
- Range: 12-15kms
- Maximum Load: 80kgs

WARNING!

- ★ BERORE YOU ATTEMPT TO RIDE THE SCOOTER PLEASE READ AND UNDERSTAND THE FOLLOWING.
- ★ NEVER RIDE THE SCOOTER ON PUBLIC STREETS OR ROADS. CHECK LOCAL ORDINANCES WHERE RIDING IS PERMISSIBLE.
- ★ MINMUM AGE IS RECOMMENDED AT TO YEARS OLD TO OPERATE THE SCOOTER. MAXIMUM RIDER WEIGHT IS 180LB.
- ★ ALWAYS WEAR AN APPROVED SAFETY HELMET WHEN RIDING. BE COOL... BE SAFE!
- ★ WEAR SHOES WHEN RIDING, NEVER BAREFOOTED.
- ★ AVOID RIDING ON GRAVEL SAND GRASS SLICK OR WET SURFACES SCOOTER IS DESIGNED TO BE USED ON DRY SMOOTH SURFACES.

★ NEVER RIDE SCOOTER OVER CURBS OR JUMPS. THIS SCOOTER IS NOT DESIGNED FOR THIS TYPE OF RIDING. THE RETAILER, DISTRIBUTOR, IMPORTER, AND MANUFACTURER WILL NOT BE RESPONSIBLE FOR ANY INJURIES TO THE RIDER OR DAMAGES TO THE SCOOTER THAT OCCUR FROM THIS TYPE OF RIDING OR ACTIVITIES.

★ POWER IS AT FULL POWER WHEN FOOT OPERATED POWER SWITCH (THROTTLE) IS ENGAGED BE PREPARED.

★ BRAKE IS DESIGNED TO CONTROL SPEED AS WELL AS FOR STOPPING.

★ NEVER RIDE THE SCOOTER WITH MORE THAN ONE PERSON, MULTIPLE RIDERS COULD LEAD TO LOSS OF CONTROL

★ KEEP HANDS, FEET HAIR, SHOESTRINGS AWAY FROM ALL MOVING PARTS.

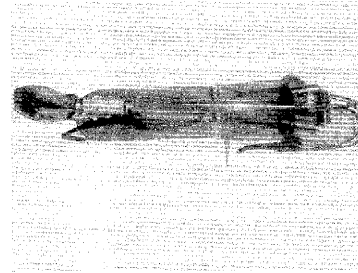
★ NEVER LEAVE CHILDREN UNATTENDED WITH THE SCOOTER. THIS COULD LEAD TO POTENTIAL HAZARDS!

★ FAMILIARIZE YOURSELF WITH THE SCOOTER AND CHECK ALL FASTENERS FOR TIGHTNESS BEFORE EACH USE.

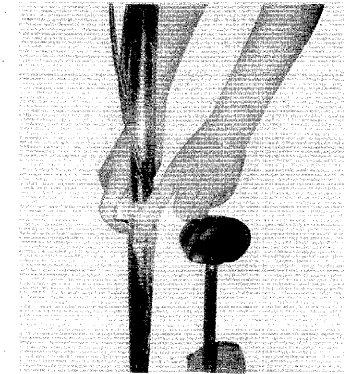
★ DO NOT STORE BATTERIES NEAR HIGH TEMPERATURES, BATTERIES CAN EXPLODE.

★ DO NOT EXPOSE CHARGER TO MOISTURE OR USE IF DAMAGED. REGULARLY CHECK THE CORD. PLUG & ENCLOSURE FOR ANY DAMAGE THE CHARGER MUST NOT BE USED UNTIL THE DAMAGE IS REPAIRED.

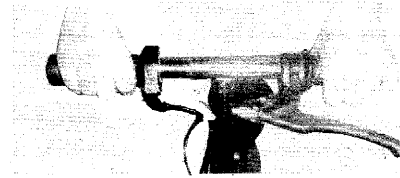
★ NEVER OPERATE SCOOTER WHILE IMPAIRED.



1). Remove the scooter from carton.



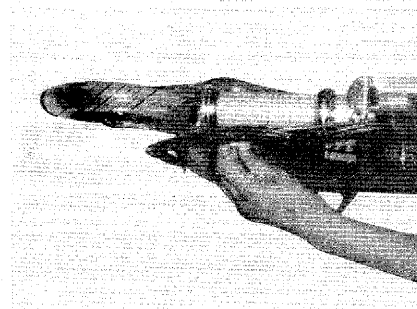
2). Raise the fore handle



3). Assemble the fore handle



4). Tighten the locking device



5). How to install the handle: hold the handle with both hands press the spring ball, insert the handle to " T " shaped standing post, keep the spring ball jump into of " T " shaped standing post, you can folding scooter according to contrary to step above mentioned.