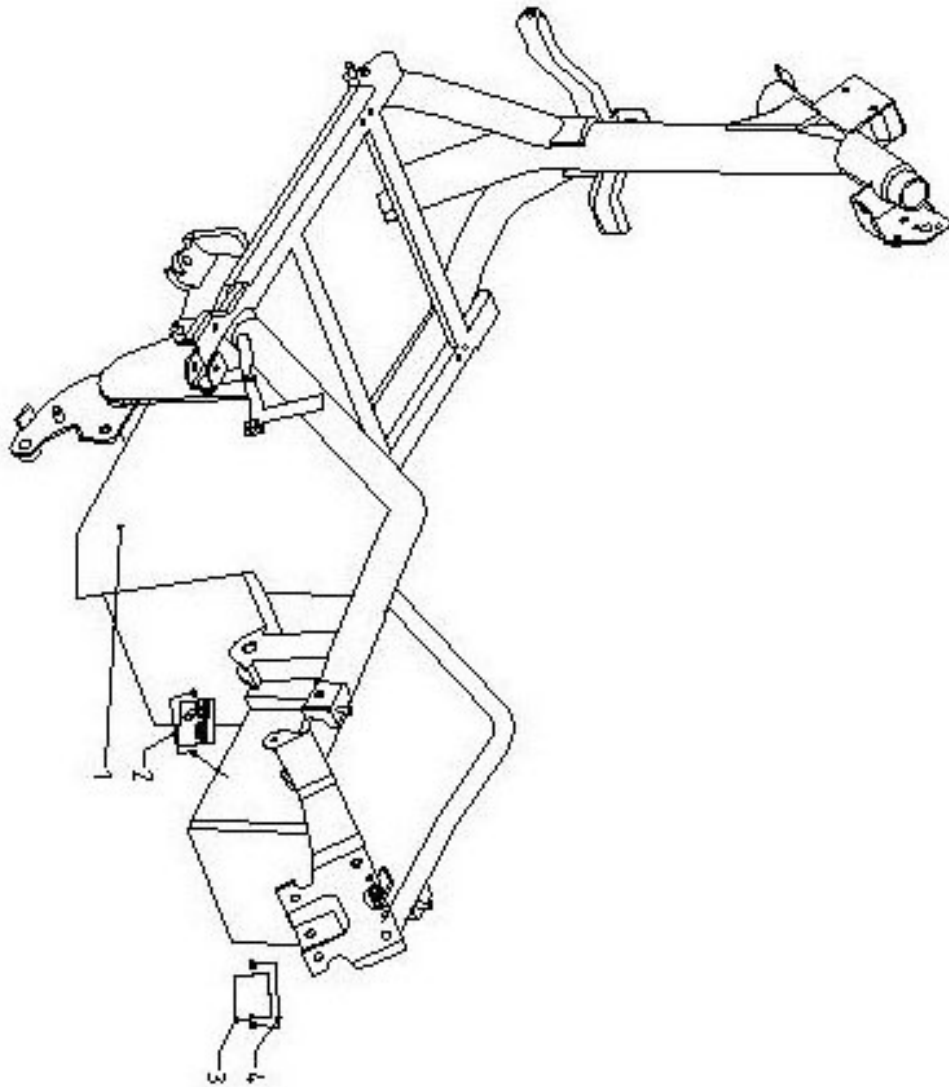


PARTS BOOK



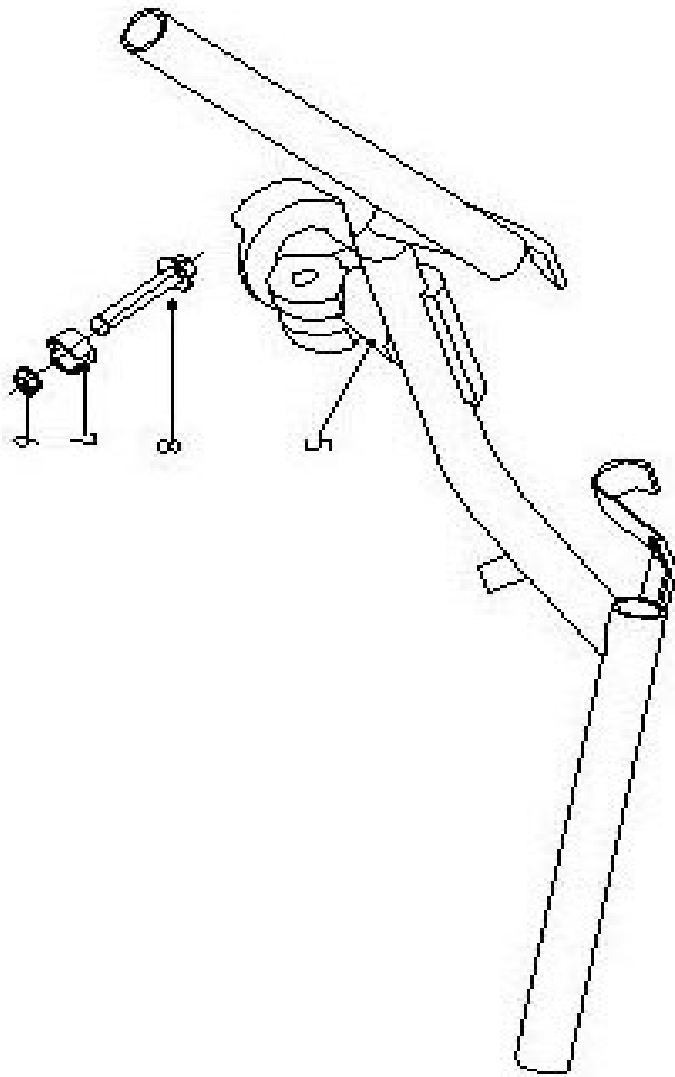
INDEX

Pic. 1	Aluminum Plate	3
Pic. 2	Handle Level	4
Pic. 3	Front Shock	5
Pic. 4	Iron Accessories	6
Pic. 5	Rear Fork & Rear Fender	7
Pic. 6	Main Stand	8
Pic. 7	Rear Shock	9
Pic. 8	Rear Wheel	10
Pic. 9	Front Wheel	11
Pic. 10	Rear Handle	12
Pic. 11	Handle Cover	13-14
Pic. 12	Relay	15
Pic. 13	Center Cover & Charge Jack	16
Pic. 14	Store Case & Seat	17
Pic. 15A	Accessories A	18
Pic. 15B	Accessories B	19
Pic. 16	Cover L & R	20
Pic. 17	Rear Fender ASSY	21
Pic. 18	Controller	22
Pic. 19	Battery & Wiring	23
Pic. 20	Key ASSY	24
Pic. 21	Front Brake Disc ASSY	25
Pic. 22	Rear Brake Disc ASSY	26



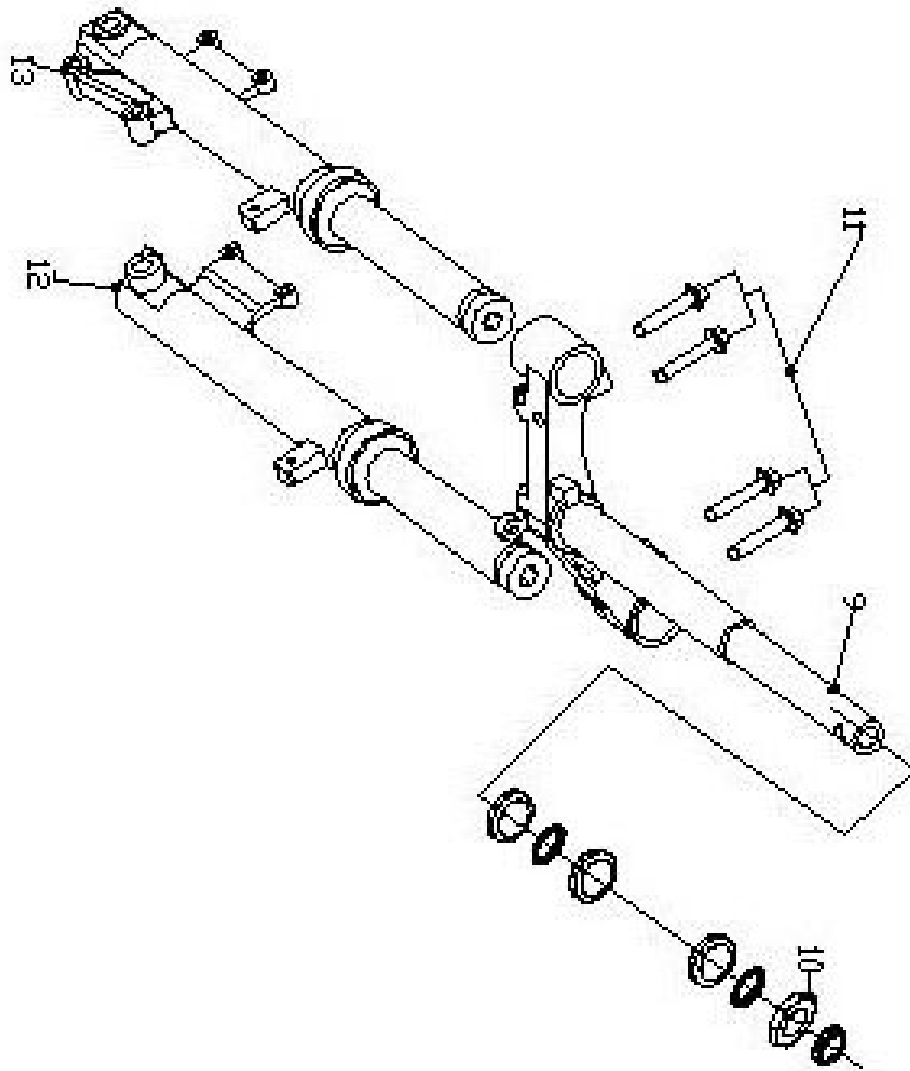
Pic. 1 Aluminum Plate

NO.	ITEM NO.	DESCRIPTIN	QTY.
1	ZP01-0010	Frame main	1
2	ZP01-0013	Aluminum plate for anti-refitting(USA)	1
3	ZP01-0011	Aluminum plate for VIN No.	1
4	ZP01-0019	Rivet	4



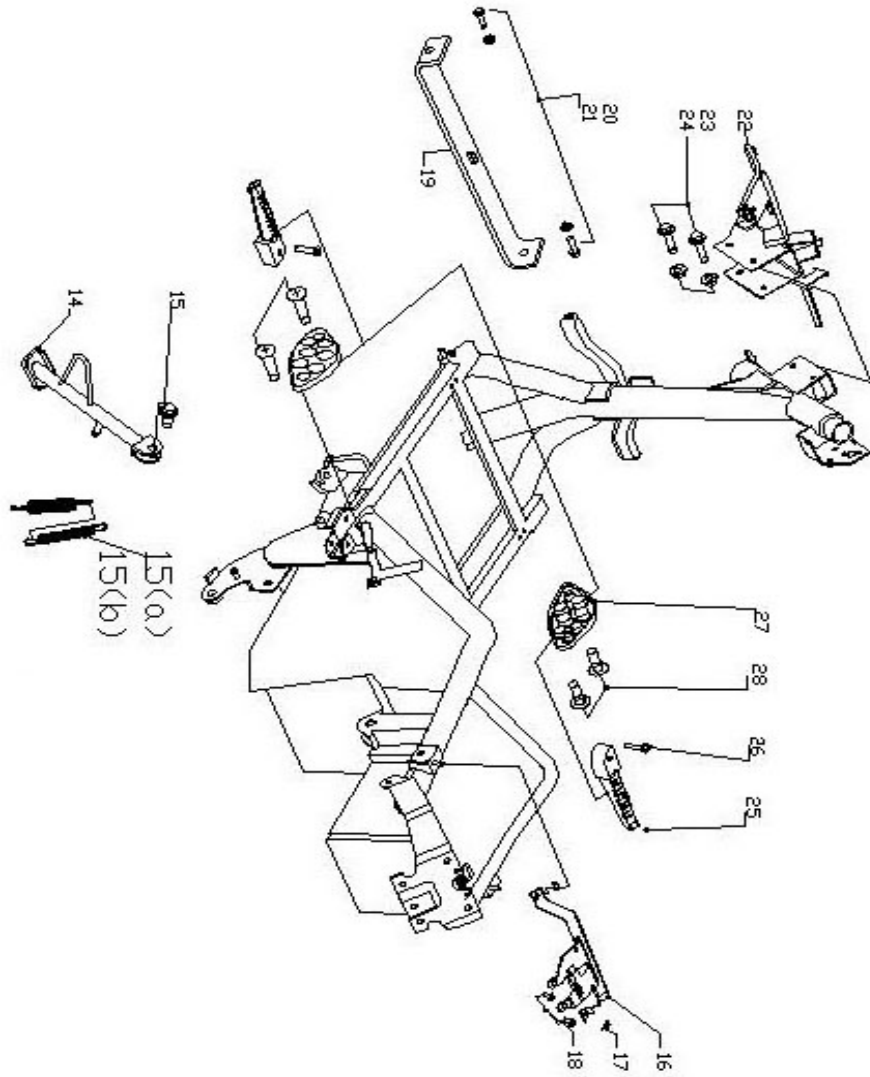
Pic. 2 Handle Level

NO.	ITEM NO.	DESCRIPTIN	QTY.
5	ZP01-0020	Handle level	1
6	ZP01-0026	Locknut	1
7	ZP01-0028	Bushing	1
8	ZP01-0029	Flange bolt	1



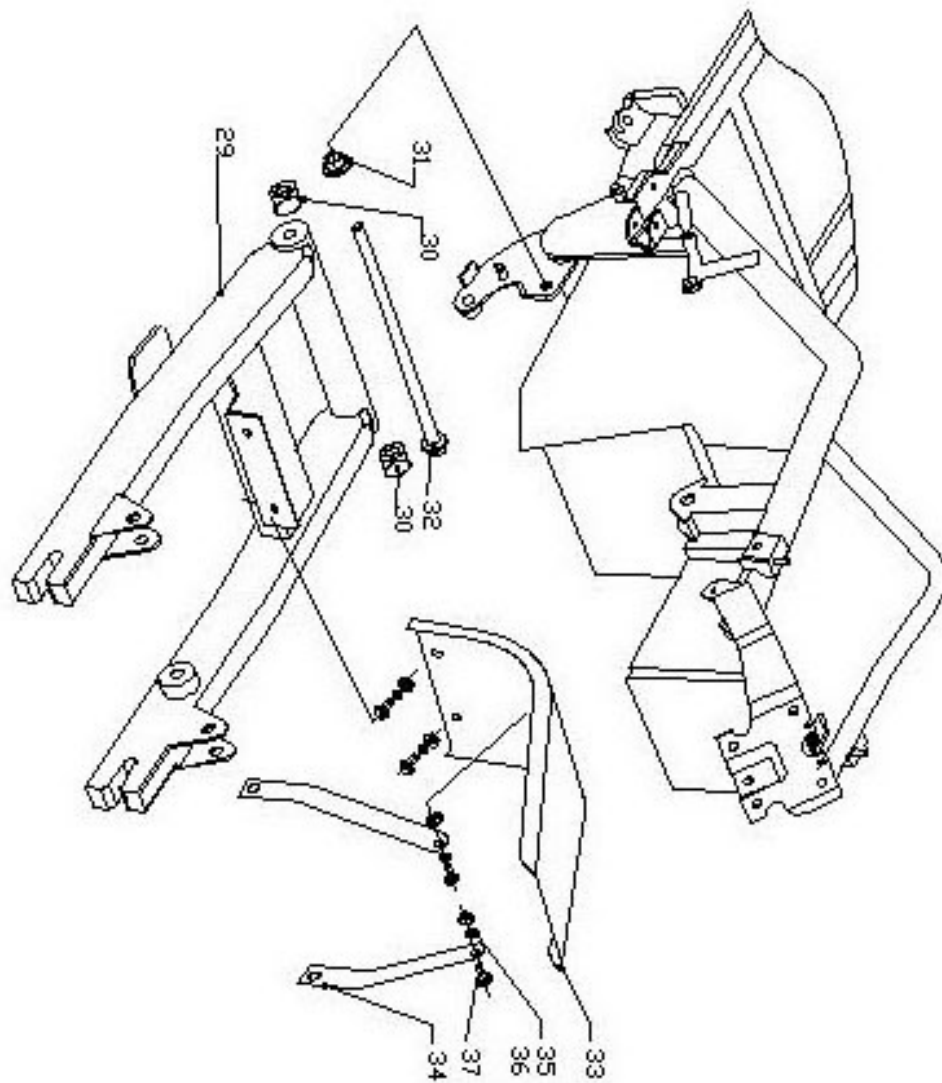
Pic. 3 Front Shock

NO.	ITEM NO.	DESCRIPTIN	QTY.
9	ZP01-0030	Steering Stem	1
10	ZP01-0031	Bowl bearing(simple support)	2
11	ZP01-0059	Flange bolt	1
12	ZP01-0152	Frontshock right	1
13	ZP01-0151	Front shock left	1



Pic. 4 Iron Accessories

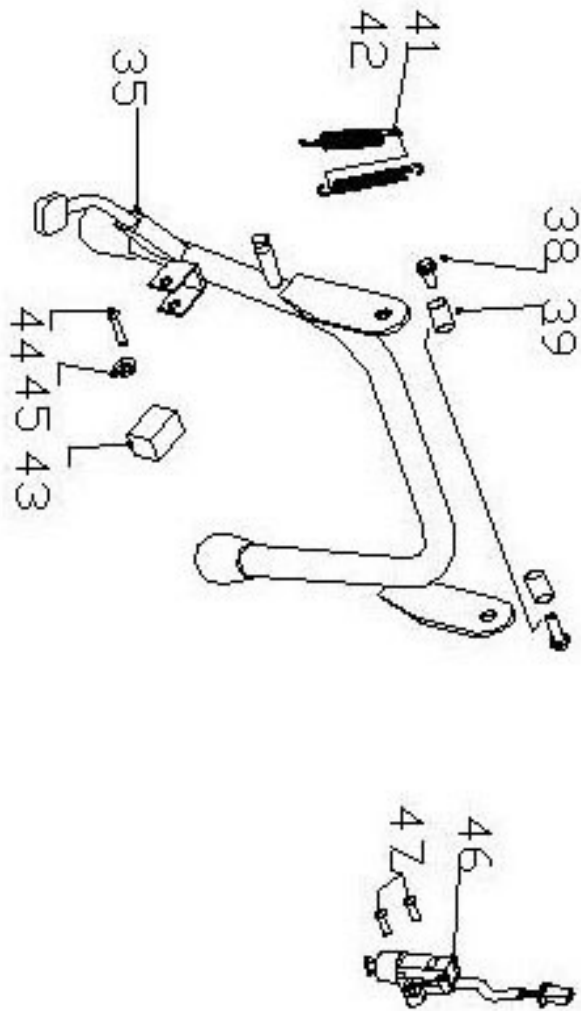
NO.	ITEM NO.	DESCRIPTIN	QTY.
14	ZP01-0040	Side stand	1
15	ZP01-0049	Step bolt	1
15a	ZP01-0130	Spring for side stand	1
15b	ZP01-0132	Inner spring	1
16	ZP01-0050	Stay,seat lock	1
17	ZP01-0058	Flange nut	2
18	ZP01-0059	Flange bolt	2
19	ZP01-0060	Stay	1
20	ZP01-0069	Flange nut	2
21	ZP01-0069A	Flange Bolt	2
22	ZP01-0070	Stay,horn	1
23	ZP01-0078	Flange nut	2
24	ZP01-0079	Bolt	2
25	ZP01-0080	Footrest(left,right)	2
26	ZP01-0089	Pin	2
27	ZP01-0090	Decoration plate(left,right)	2
28	ZP01-0099	Bolt	4



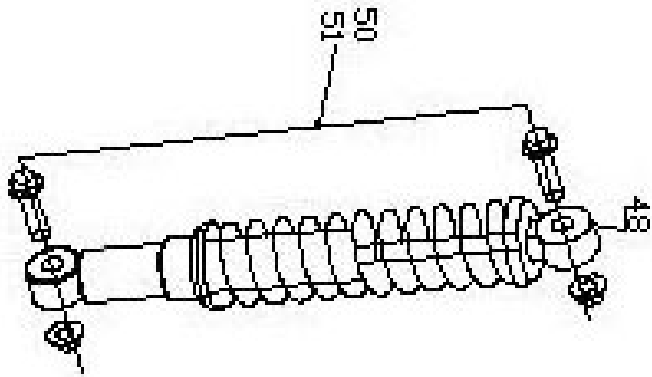
Pic. 5 Rear Fork & Rear Fender

NO.	ITEM NO.	DESCRIPTIN	QTY.
29	ZP01-0100	Stay, rear shock	1
30	ZP01-0101	Spacer	2
31	ZP01-0108	Locknut	1
32	ZP01-0109	Axle, rear	1
33	ZP01-0180	Rear fender(M)	1
34	ZP01-0181	Stay, rear fender	2
35	ZP01-0182	Rubber spacer	1
36	ZP01-0188	Flange nut	4
37	ZP01-0189	Flange bolt	4

Pic. 6 Main Stand

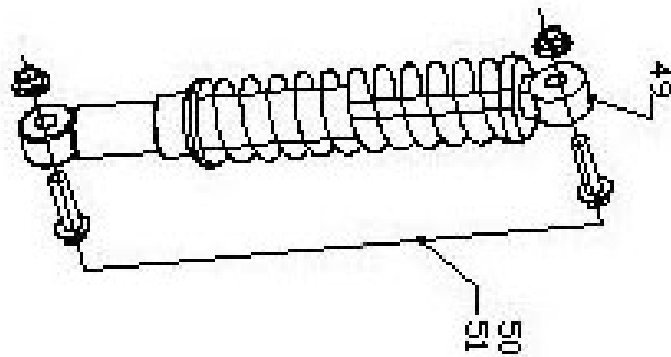


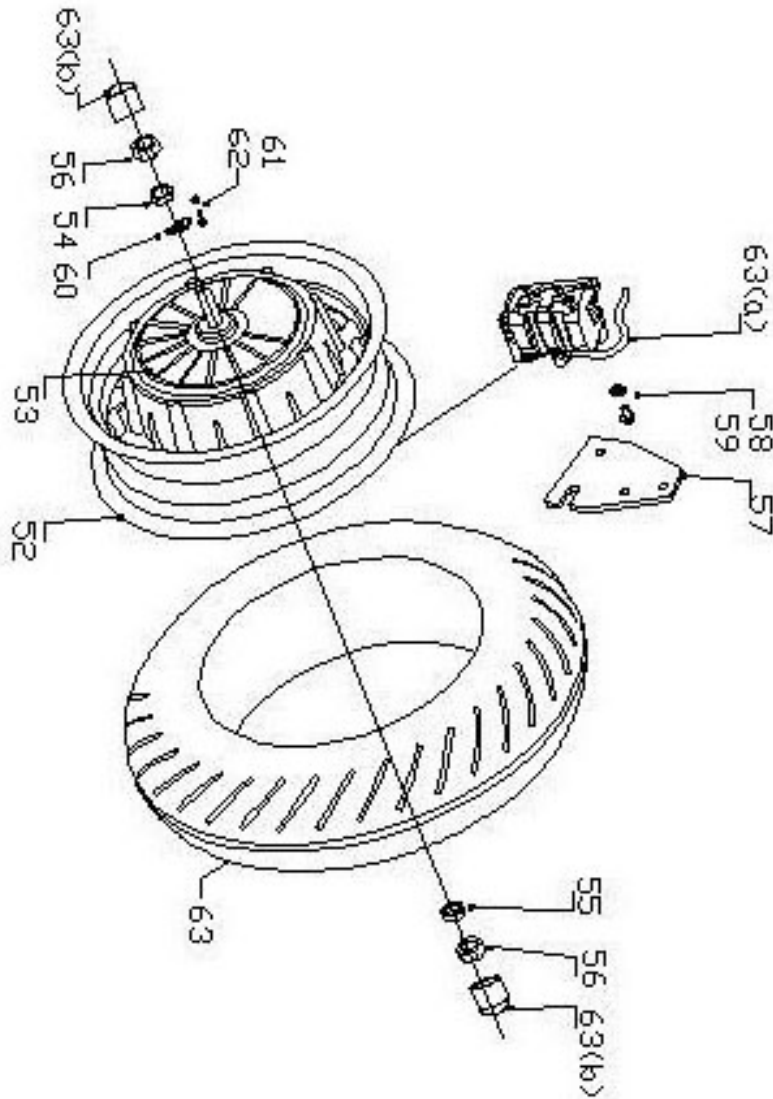
NO.	ITEM NO.	DESCRIPTIN	QTY.
38	ZP01-0170	Kick stand	1
39	ZP01-0179	Flange bolt	2
40	ZP01-0178	Bushing	2
41	ZP01-0131	Spring for main stand	1
42	ZP01-0132	Inner spring	1
43	ZP01-0171	Spacer	1
44	ZP01-0172	Bolt	1
45	ZP01-0173	Nut	1
46	ZP03-0090	Switch for side stand	1
47	ZP03-0099	Bolt	2



Pic. 7 Rear Shock

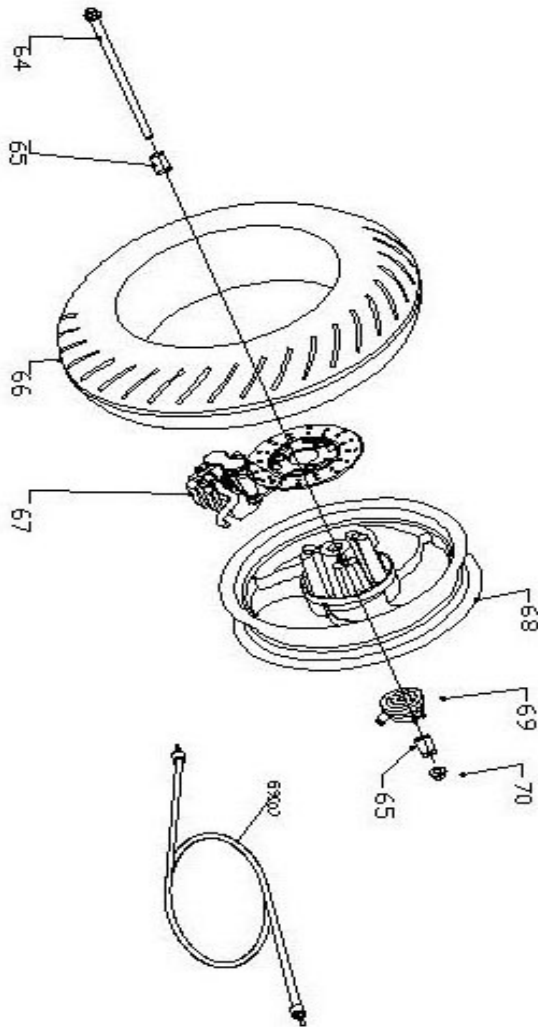
NO.	ITEM NO.	DESCRIPTIN	QTY.
48	ZP01-0111	Rear shock(left)	1
49	ZP01-0112	Rear shock(right)	1
50	ZP01-0118	Flange nut	4
51	ZP01-0119	Flange bolt	4





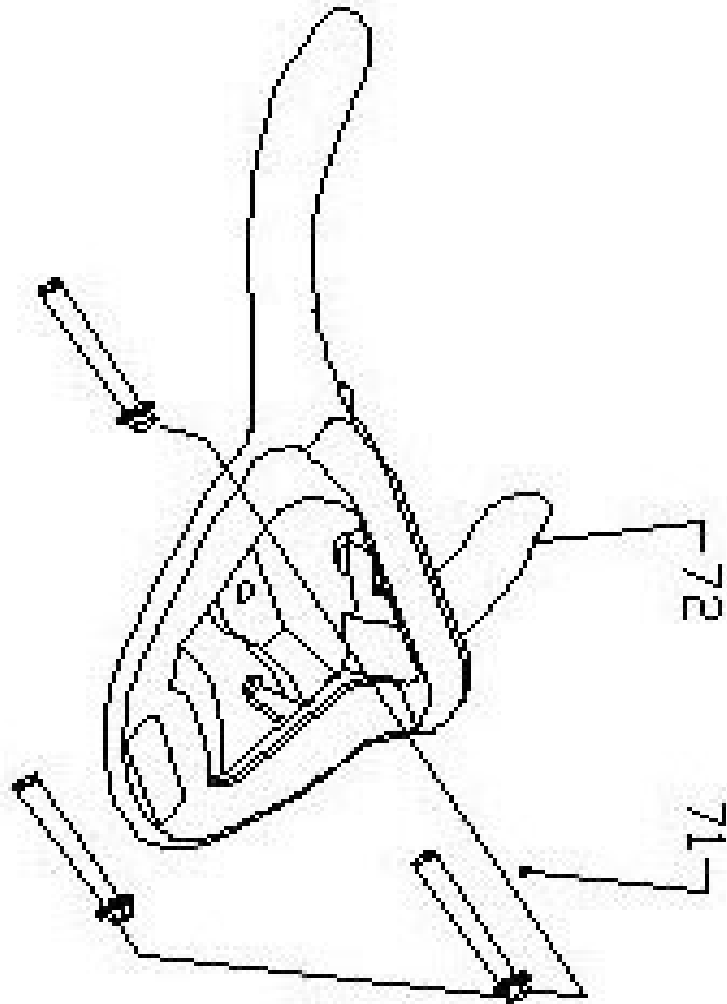
Pic. 8 Rear Wheel

NO.	ITEM NO.	DESCRIPTIN	QTY.
52	ZP06-0040	Rear rim with magnets	1
53	ZP10-0020/0040	Motor with aluminum rim 1500w/2000w	1
54	ZP10-0022	Bushing(left)	1
55	ZP10-0024	Bushing(right)	1
56	ZP10-0026	Flange nut	2
57	ZP10-0027	Stay, rear disc brake holder	1
58	ZP10-0028	Flange nut	1
59	ZP10-0029	Flange bolt	1
60	ZP10-0030	Safty plate	1
61	ZP10-0031	Flange bolt	1
62	ZP10-0032	Flange nut	1
63a	ZP12-0020	Rear disc brake assy.	1
63b	ZP12-0240	Cover of rear axle	2



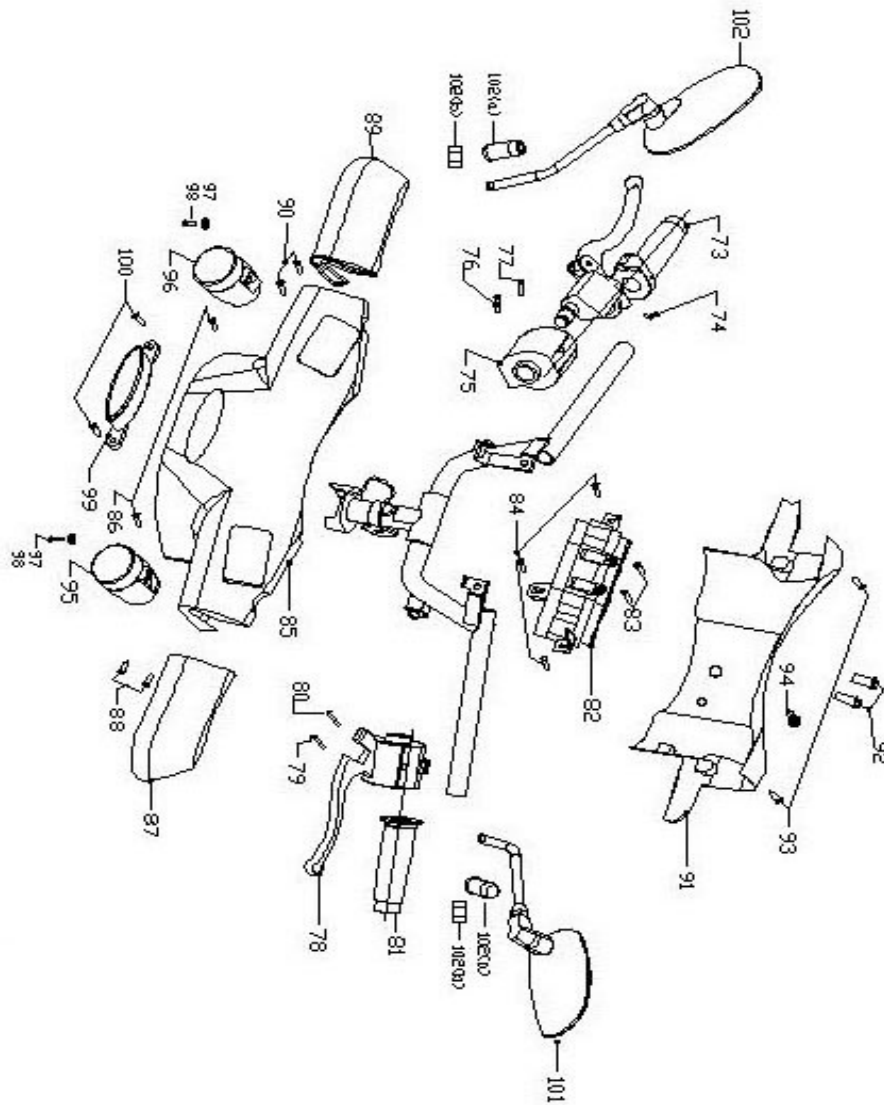
Pic. 9 Front Wheel

NO.	ITEM NO.	DESCRIPTIN	QTY.
64	ZP01-0129	Axle,front	1
65	ZP01-0120	Bearing, front wheel	2
66	ZP06-0010	Tire	1
67	ZP12-0010	Front disc brake assy.	1
68	ZP06-0030	Aluminum front rim	1
69	ZP12-0041	Accounter	1
69a	ZP12-0042	Line	1
70	ZP01-0128	Locknut	1



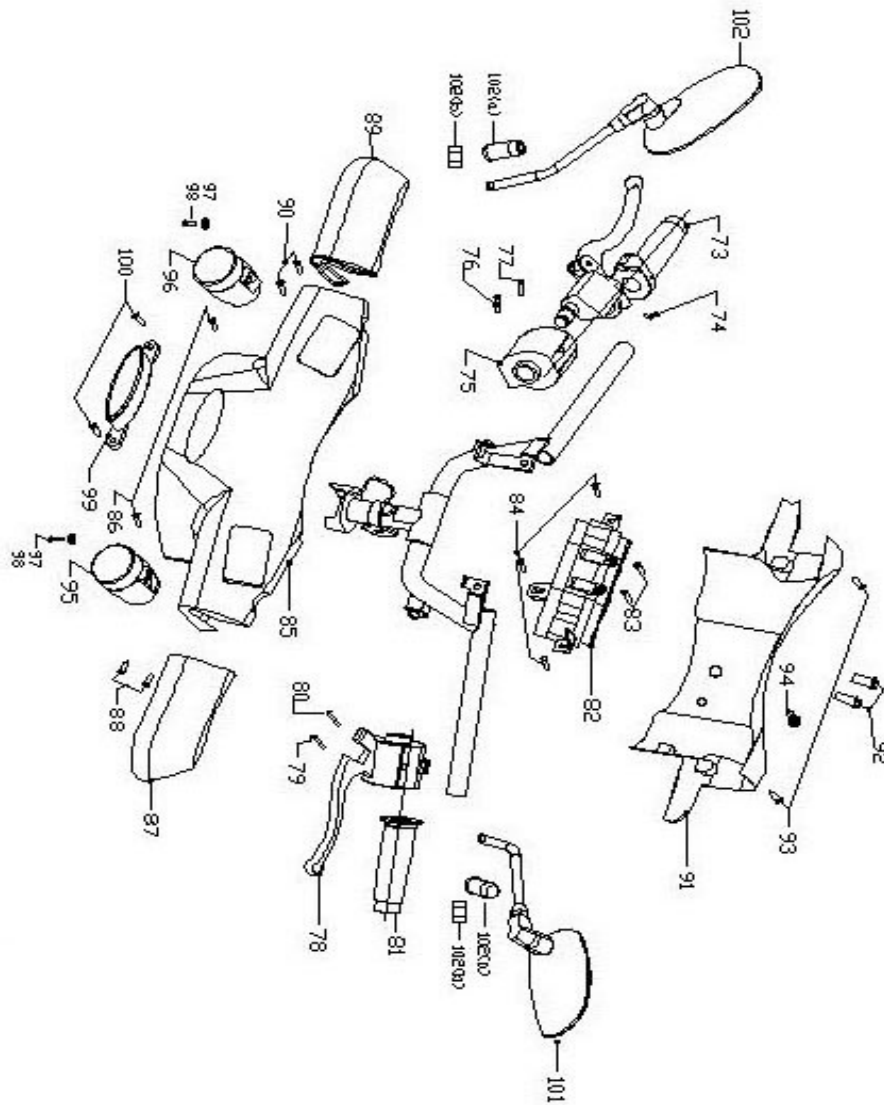
Pic. 10 Rear Handle

NO.	ITEM NO.	DESCRIPTIN	QTY.
71	ZP01-0199	Flange bolt	3
72	ZP01-0190	Handle, rear	1



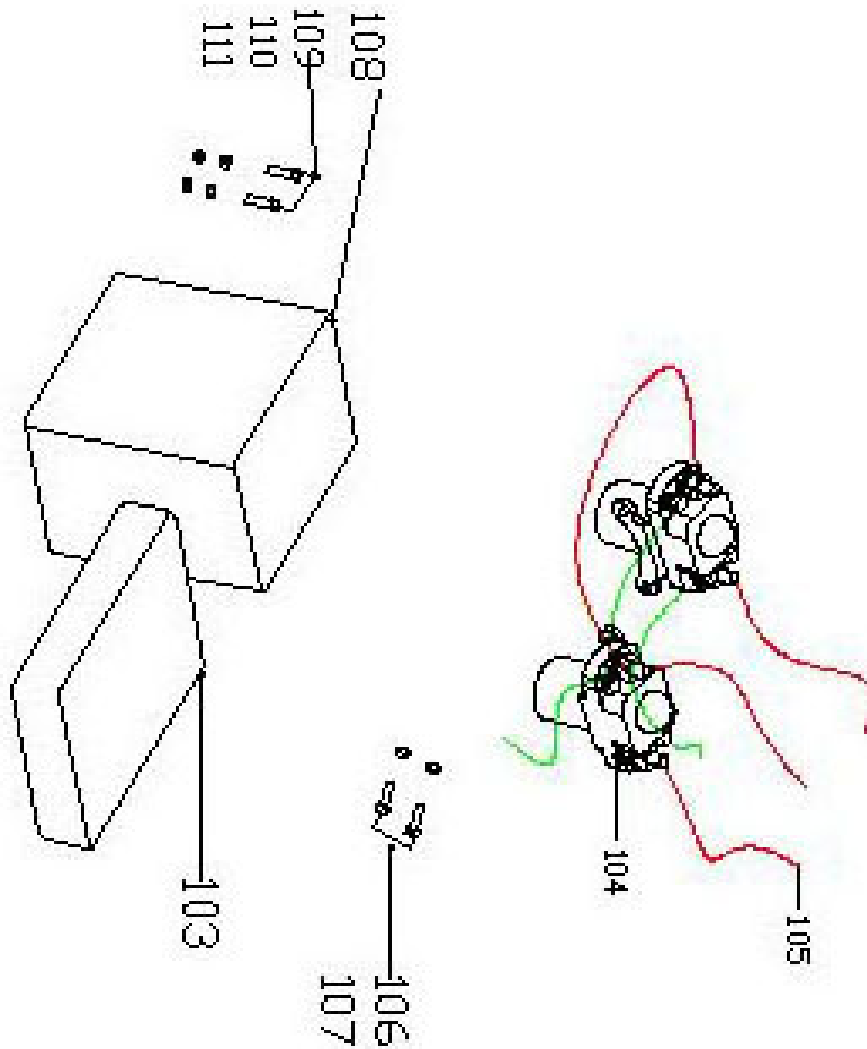
Pic. 11 Handle Cover

NO.	ITEM NO.	DESCRIPTIN	QTY.
73	ZP03-0010	Throttle handle	1
74	ZP03-0019	Bolt	1
75	ZP03-0020	Right handle switch	1
76	ZP03-0027	Bolt	1
77	ZP03-0029	Bolt	1
78	ZP03-0030	Left handle switch	1
79	ZP03-0037	Bolt	1
80	ZP03-0039	Bolt	1
81	ZP03-0036	Left handle cover	1
82	ZP03-0040	Speedometer	1
83	ZP03-0047	Screw	2
84	ZP03-0049	Screw	3
85	ZP02-00110ABS	Front top cover(headllight)	1
86	ZP02-00119	Screw	2
87	ZP02-00120ABS	Cover,left handle	1
88	ZP02-00129	Screw	2
89	ZP02-00130ABS	Cover,right handle	1
90	ZP02-0139	Screw	2



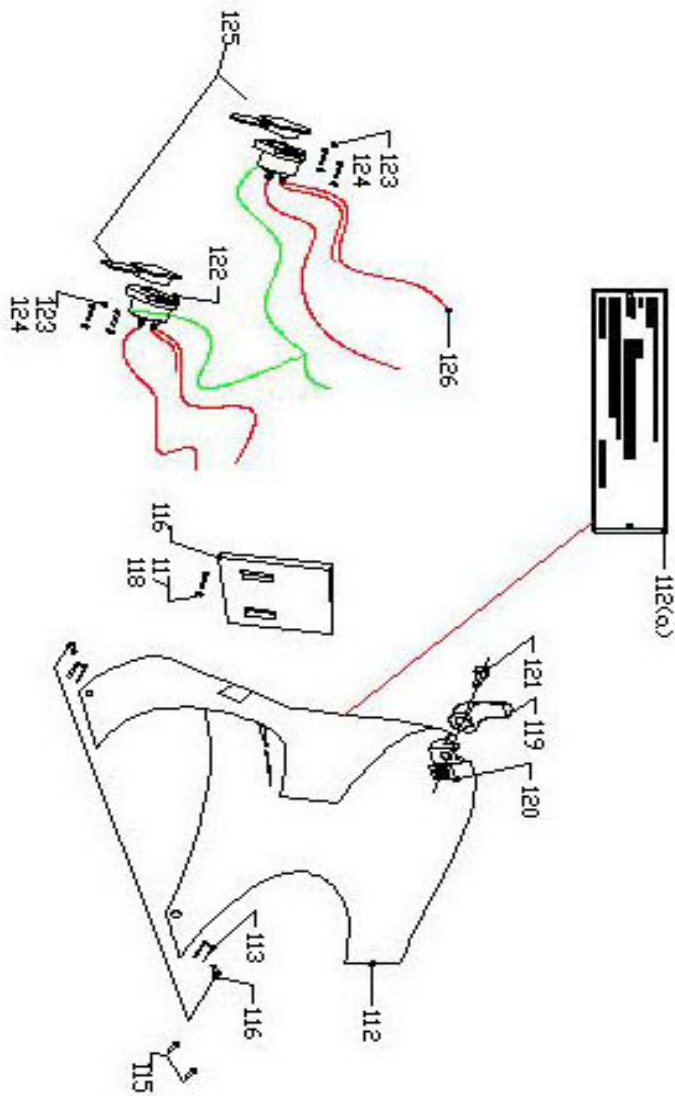
Pic. 11 Handle Cover

NO.	ITEM NO.	DESCRIPTIN	QTY.
91	ZP02-0140	Cover,speedometer	1
92	ZP02-0149	Flange bolt	2
93	ZP02-0147	Screw	2
94	ZP03-0110	Button for true indication	1
95	ZP04-0021	Front winker left	1
96	ZP04-0022	Front winker right	1
97	ZP04-0024	Spacer	2
98	ZP04-0029	Screw	2
99	ZP04-0050	Front position light	1
100	ZP04-0059	Screw	2
101	ZP11-0012	Mirror left	1
102	ZP11-0013	Mirror right	1
102a	ZP11-0016	Rubber bushing	1
102b	ZP11-0018	Nut	1



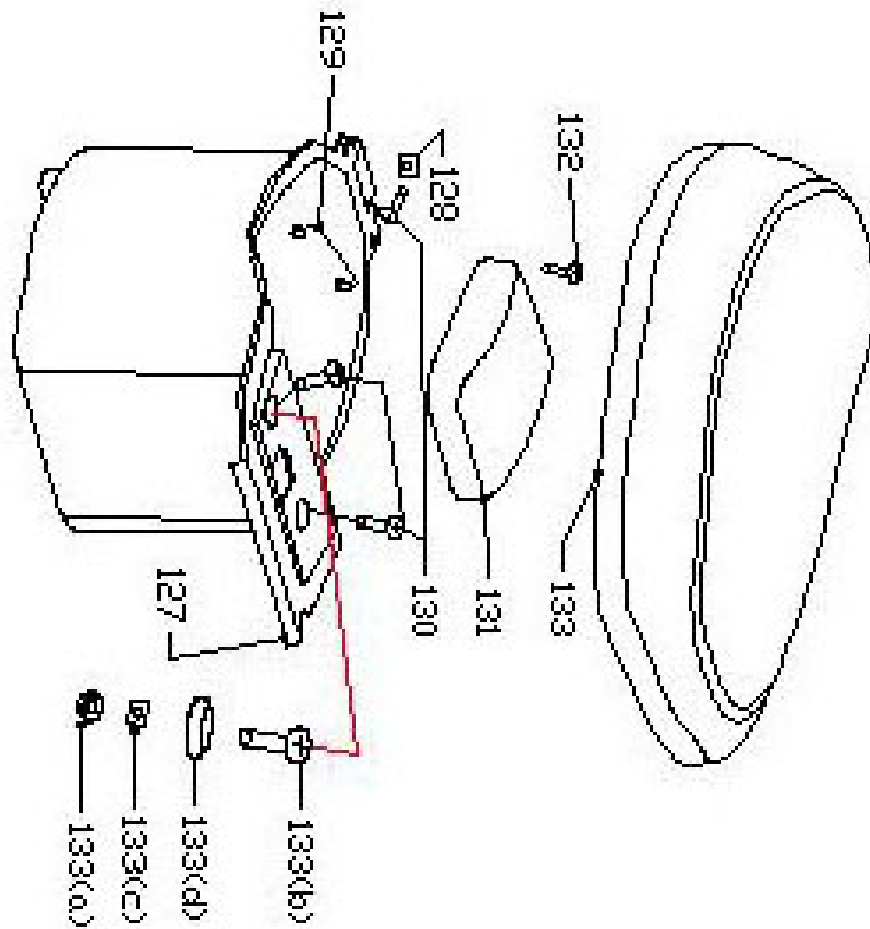
Pic. 12 Relay

NO.	ITEM NO.	DESCRIPTIN	QTY.
103	ZP03-0070	Electrical box for charging	1
104	ZP03-0071	Relay(48V 100A)	2
105	ZP09-0012	Wiring harness for relay	3
106	ZP03-0078	Nut	2
107	ZP03-0079	Bolt	2
108	ZP03-0080	waterproof case, relay	1
109	ZP03-0082	Spacer	2
110	ZP03-0088	Nut	2
111	ZP03-0089	Bolt	2



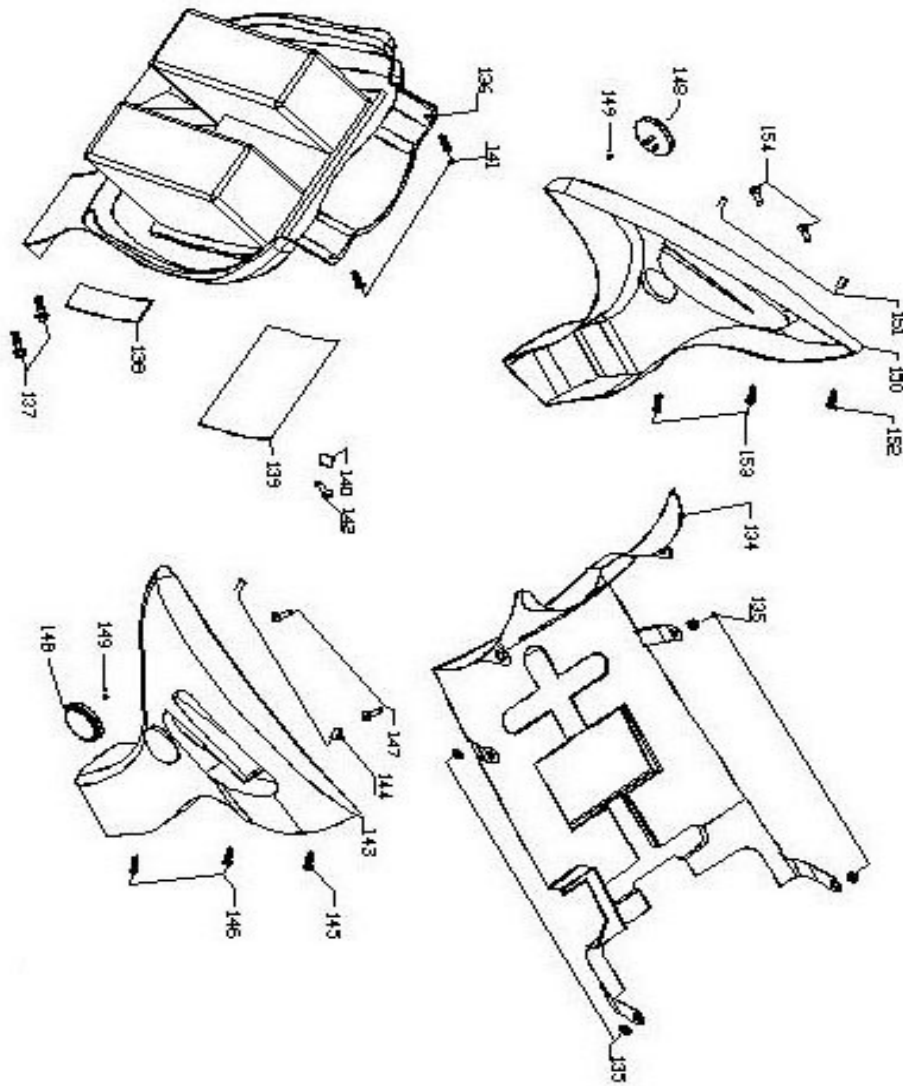
Pic. 13 Center Cover & Charge Jack

NO.	ITEM NO.	DESCRIPTIN	QTY.
112	ZP02-0220	Center cover	1
112a	ZP01-0013	Aluminum plate for anti-refitting(USA)	1
113	ZP02-0222	Clamp	2
114	ZP02-0227	Screw	2
115	ZP02-0229	Screw	2
116	ZP02-0230	Cover, in center cover	1
117	ZP02-0232	Nut	1
118	ZP02-0239	Bolt	1
119	ZP02-0270	Hook	1
120	ZP02-0272	Plate with bolt	1
121	ZP02-0279	Flange bolt	1
122	ZP12-0110	Charge Jack	2
123	ZP12-0118	Nut	4
124	ZP12-0119	Bolt	4
125	ZP12-0120	Rubber seal of charger jack	2
126	ZP09-0013	Wiring harness for charge jack	7



Pic. 14 Store Case & Seat

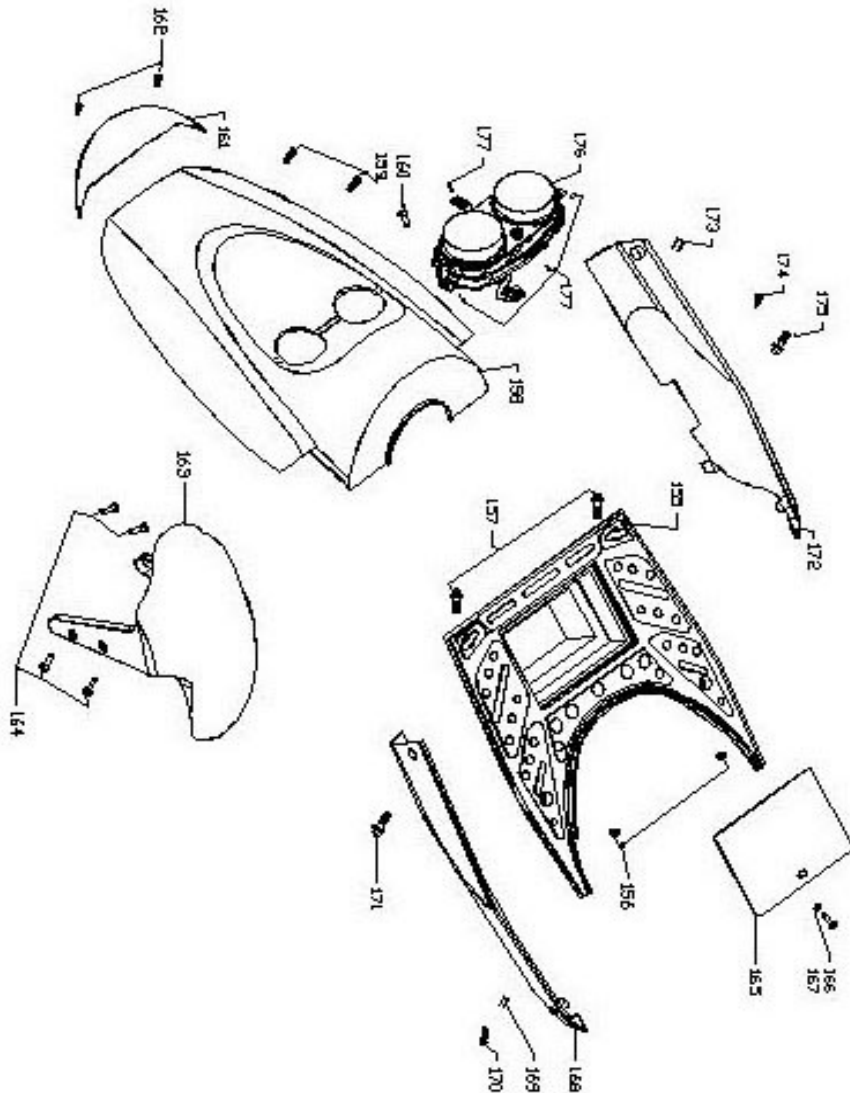
NO.	ITEM NO.	DESCRIPTIN	QTY.
127	ZP02-0280	Main store-case	1
128	ZP02-0282	Nut	1
129	ZP02-0288	Nut	2
130	ZP02-0289	Bolt	3
131	ZP-02-0290	cover main store case	1
132	ZP-02-0291	Bolt	1
133	ZP12-0030	Seat	1
133a	ZP02-0283	Nut	1
133b	ZP02-0284	Bolt	1
133c	ZP02-0285	Spacer	1
133d	ZP02-0286	cover	1



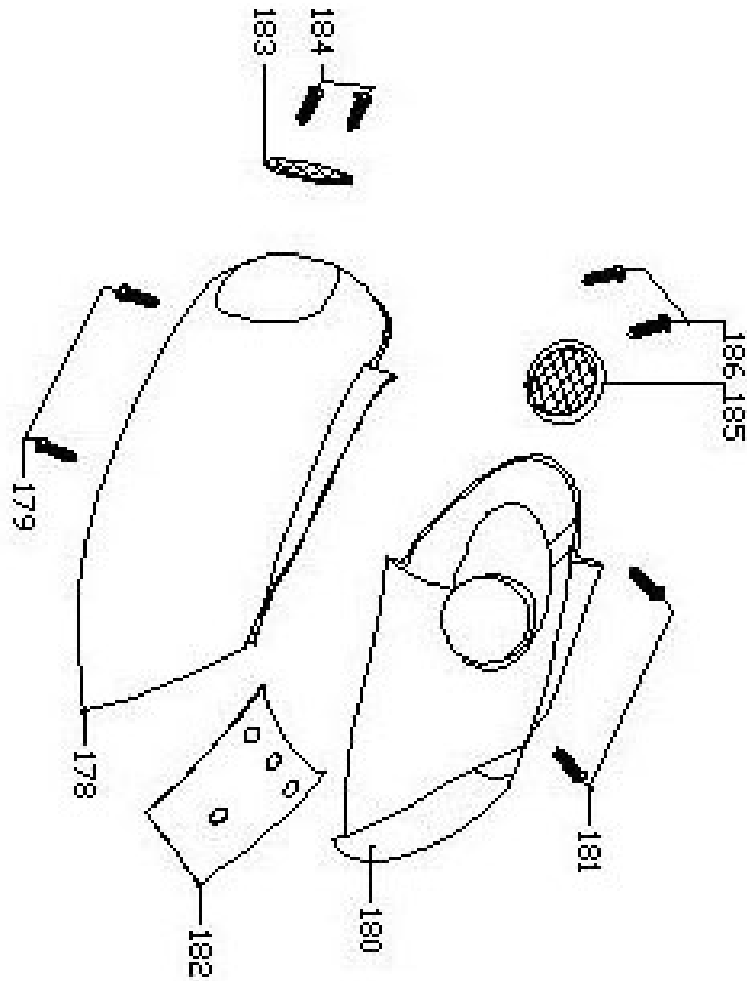
Pic. 15A Accessories A

NO.	ITEM NO.	DESCRIPTIN	QTY.
134	ZP02-0010	Bottom cover	1
135	ZP02-0018	Flange nut	4
136	ZP02-0020	Front store-case	1
137	ZP02-0029	Flange bolt	2
138	ZP02-0030	Small cover,in front start-case	1
139	ZP02-0040	Cover,in front store-case	1
140	ZP02-0042	Iron plate,in front store-case	1
141	ZP02-0047	Screw	2
142	ZP02-0049	Bolt	1
143	ZP02-0060ABS	Front side cover(L)	1
144	ZP02-0063	Clamp	2
145	ZP02-0065	Screw	1
146	ZP02-0067	Screw	2
147	ZP02-0069	Bolt	2
148	ZP04-0040	Side Reflecting device (DOT)	2
149	ZP04-0048	Flange Nut	2
150	ZP02-0070ABS	Front side cover(R)	1
151	ZP02-0072	Clamp	2
152	ZP02-0075	Screw	1

Pic. 15B Accessories B

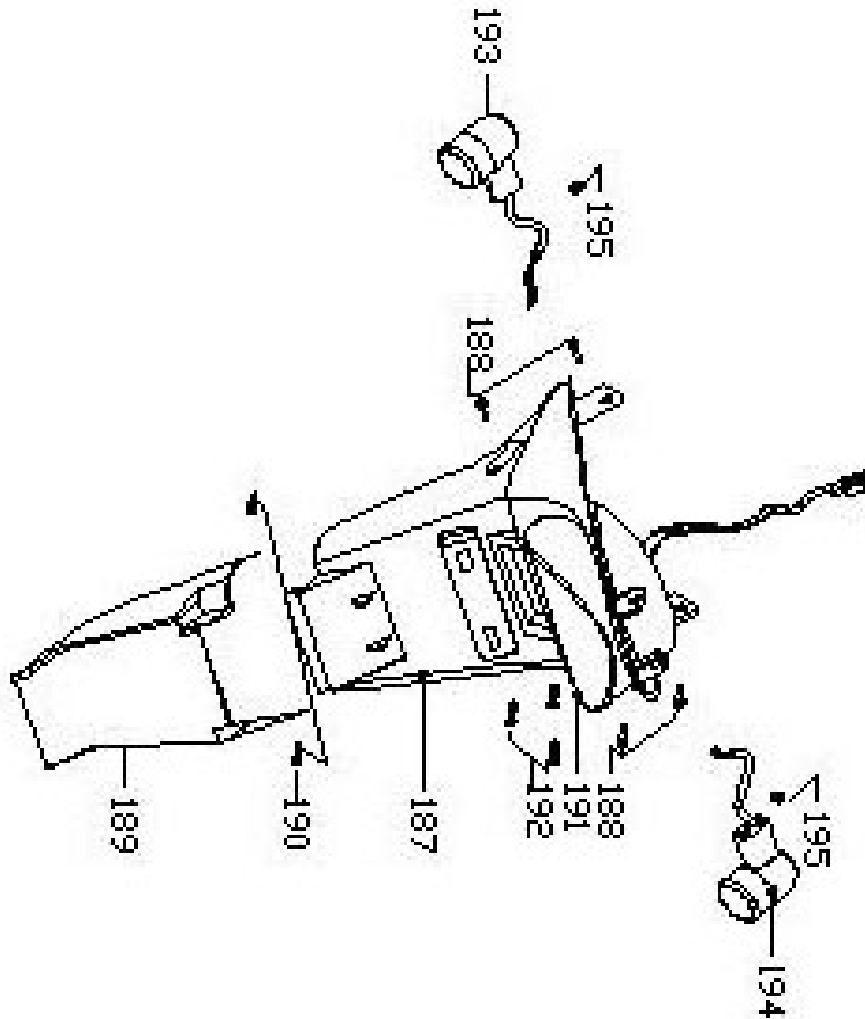


NO.	ITEM NO.	DESCRIPTIN	QTY.
155	ZP02-0050	Foot plate	1
156	ZP02-0057	Flange bolt	2
157	ZP02-0059	Flange bolt	2
158	ZP02-0060ABS	Front side cover(L)	1
159	ZP02-0087	screw	2
160	ZP02-0089	bolt	1
161	ZP02-0090ABS	Front bottom cover	1
162	ZP02-0099	Screw	2
163	ZP02-00100ABS	Front fender	1
164	ZP02-00109	Bolt	4
165	ZP02-0240	Cover, Relay-case	1
166	ZP02-0242	Spacer	1
167	ZP02-0249	Bolt	1
168	ZP02-0250ABS	Front bottom cover(L)	1
169	ZP02-0252	Clamp	1
170	ZP02-0257	Screw	1
171	ZP02-0259	Flange bolt	1
172	ZP02-0260ABS	Front bottom cover(R)	1
173	ZP02-0262	Clamp	1
174	ZP02-0267	Screw	1
175	ZP02-0269	Flange bolt	1
176	ZP04-0030	Front headlight assy.(E-mark)	1
177	ZP04-0039	Screw	4



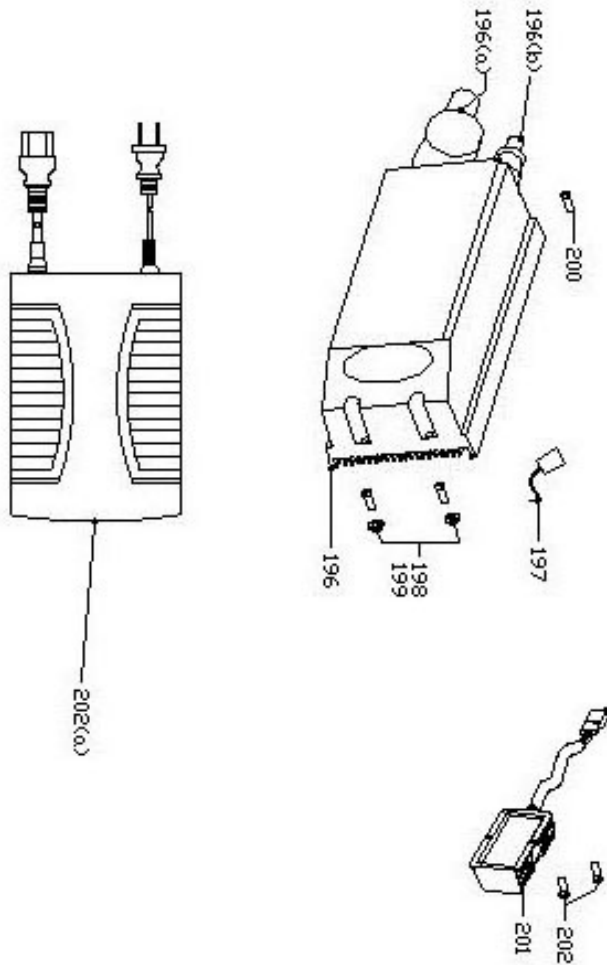
Pic. 16 Cover L & R

NO.	ITEM NO.	DESCRIPTIN	QTY.
178	ZP02-0170ABS	Rear side cover(L)	1
179	ZP02-0179	Screw	2
180	ZP02-0180ABS	Rear side cover(R)	1
181	ZP02-0189	Screw	1
182	ZP02-0109ABS	Rear top cover	1
183	ZP02-0200	Cover, in rear side cover(L)	1
184	ZP02-0209	Screw	2
185	ZP02-0210	Cover, in rear side cover(R)	1
186	ZP02-0219	Screw	2



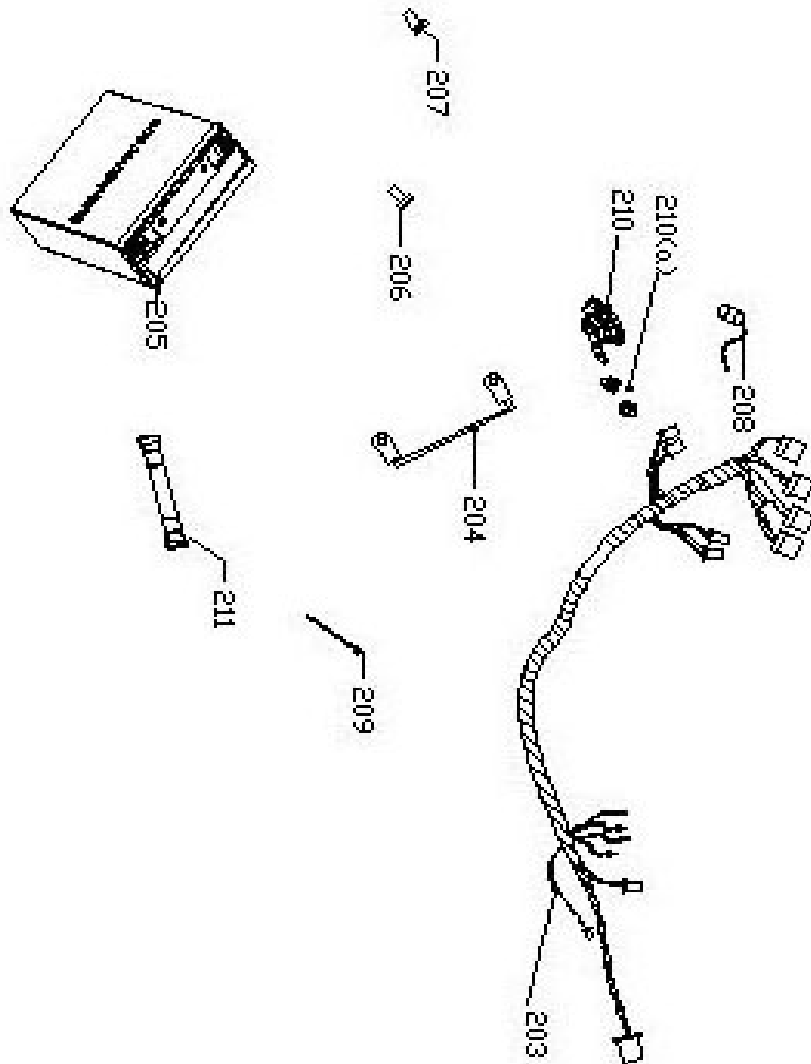
Pic. 17 Rear Fender ASSY

NO.	ITEM NO.	DESCRIPTIN	QTY.
187	ZP02-0150	Waterproof pad(A)	1
188	ZP02-0159	Flange bolt	4
189	ZP02-0160	Waterproof pad(B)	1
190	ZP02-0169	Screw	2
191	ZP04-0010	Tail light	1
192	ZP04-0019	Screw	3
193	ZP04-0061	Rear winker left	1
194	ZP04-0062	Rear winker right	1
195	ZP04-0068	Flange nut	2



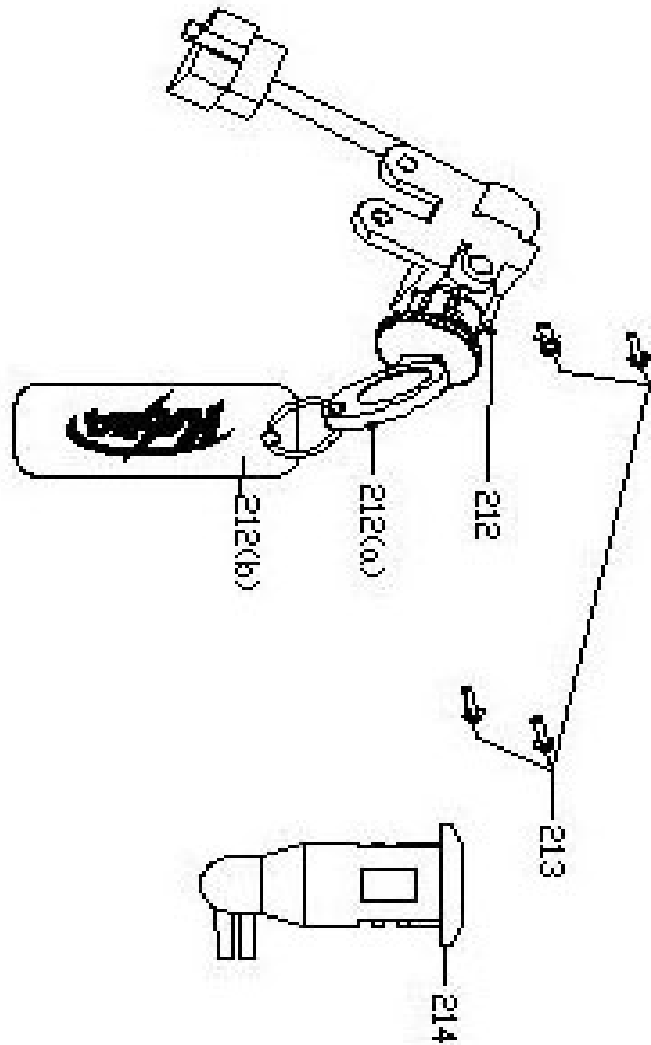
Pic. 18 Controller

NO.	ITEM NO.	DESCRIPTIN	QTY.
196	ZP08-0020S/0021	PCB sport for ZE 2000 (Controller)/ ZE150	1
196a	ZP08-0040N6/0030N6	Plug(50A) for ZE2000/ ZE 1500	1
196b	ZP08-0050N6	Plug(signal line)	1
197	ZP08-0011	Lead seal	1
198	ZP08-0018	Flange nut	2
199	ZP08-0019	Bolt	2
200	ZP08-0017	Bolt	1
201	ZP03-0100	Transform switch 48V-12V	1
202	ZP03-0109	Bolt	2
202a	ZP07-0010S	Charger(10A)	1



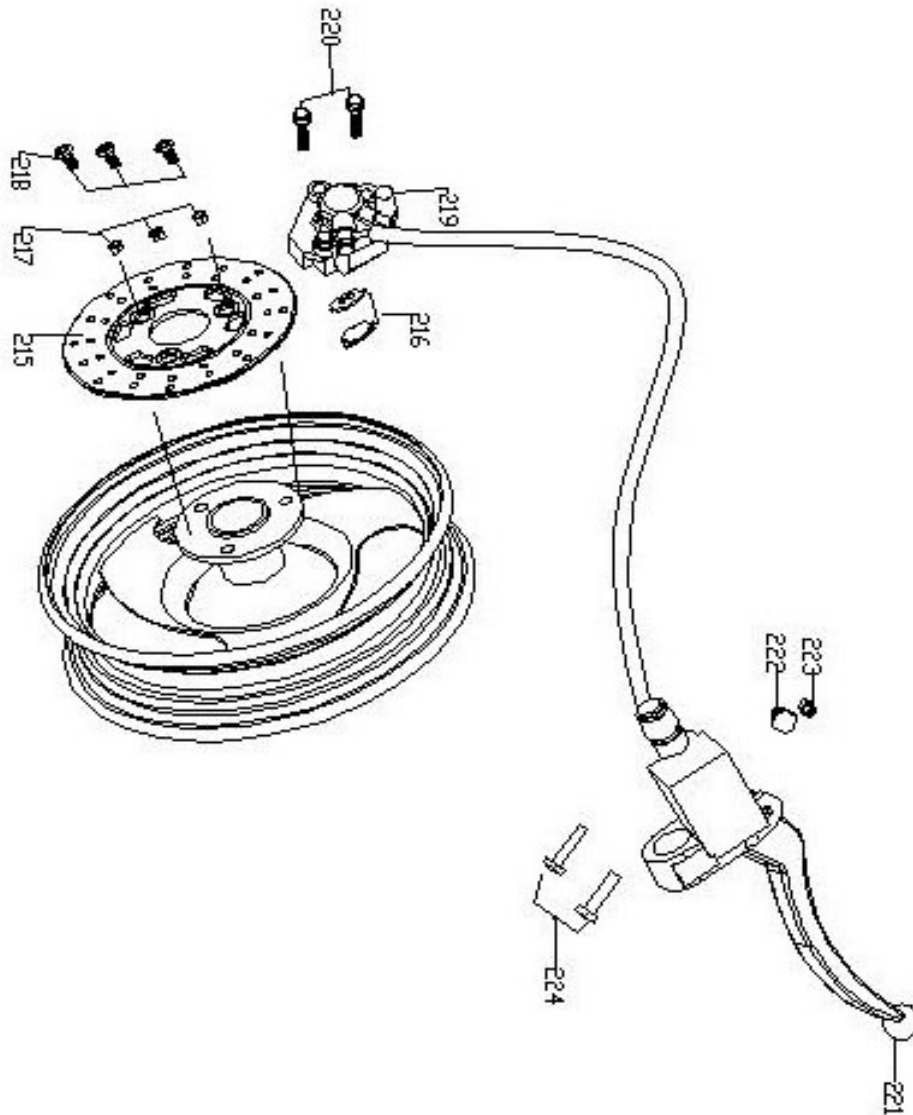
Pic. 19 Battery & Wiring

NO.	ITEM NO.	DESCRIPTIN	QTY.
203	ZP09-0010	Wiring harness assy.	1
204	ZP09-0011	Wiring harness for battery	1
205	ZP05-0010A	Battery(12V 20TA/H)	8
206	ZP05-0019	Bolt with spacer	15
207	ZP05-0019A	Bolt with spacer	1
208	ZP03-0050	Flash	1
209	ZP03-0059	Plastic bundle	1
210	ZP03-0060	Horn	1
210a	ZP03-0069	Flange bolt	2
211	ZP12-0130	Rubber strip for rear battery	1



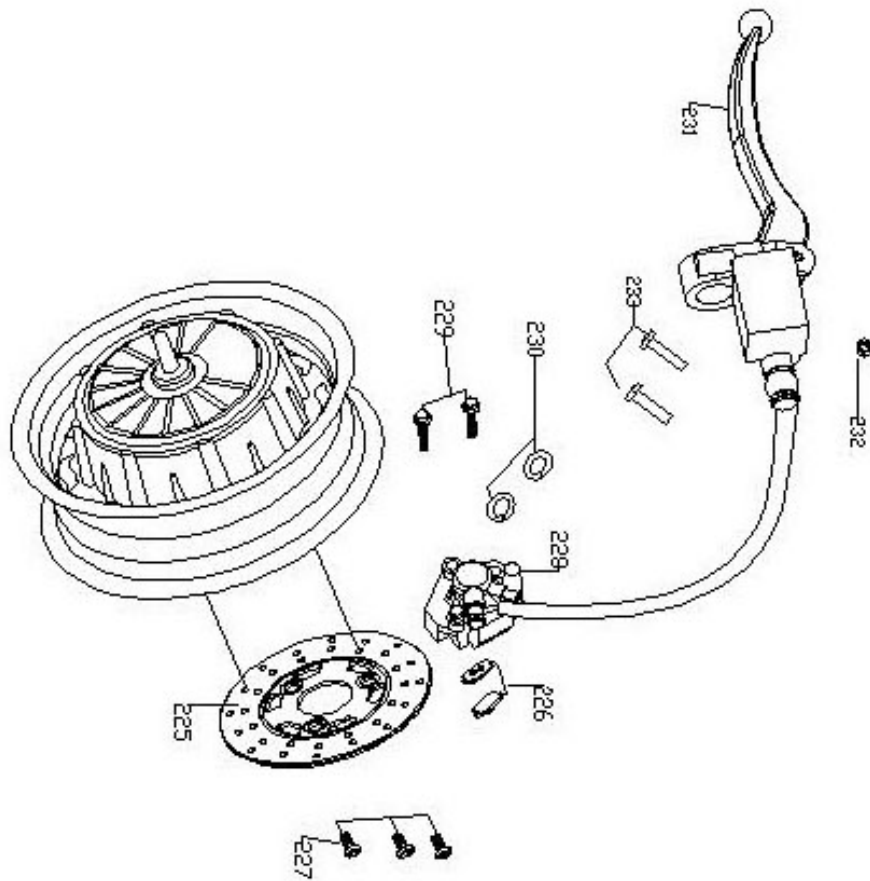
Pic. 20 Key ASSY

NO.	ITEM NO.	DESCRIPTIN	QTY.
212	ZP12-0051	Power switch	1
212a	ZP12-0053	Key	1
212b	ZP12-0190	Key-plate	1
213	ZP12-0052	Seat lock	1
214	ZP12-0059	Flange bolt	4



Pic. 21 Front Brake Disc ASSY

NO.	ITEM NO.	DESCRIPTIN	QTY.
215	ZP12-0011	Brake disc	1
216	ZP12-0011P	Braking pad	2
217	ZP12-0012	Locknut	3
218	ZP12-0013	Bolt	3
219	ZP12-0014	Holder	1
220	ZP12-0015	Flange bolt	2
221	ZP12-0016	Lever right	1
222	ZP12-0017	Bolt	1
223	ZP12-0018	Locknut	1
224	ZP12-0019	Flange bolt	2



Pic. 22 Rear Brake Disc ASSY

NO.	ITEM NO.	DESCRIPTIN	QTY.
225	ZP12-0021	Brake disc	1
226	ZP12-0021P	Braking pad rear	2
227	ZP12-0023	Bolt	3
228	ZP12-0024	Holder	1
229	ZP12-0025	Bolt	2
230	ZP12-0026	Spring spacer	1
231	ZP12-0027	Lever left	1
232	ZP12-0028	Locknut	1
233	ZP12-0029	Flange bolt	2